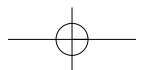
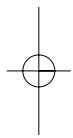


idónea



# TIRADORES

# TIRADORES

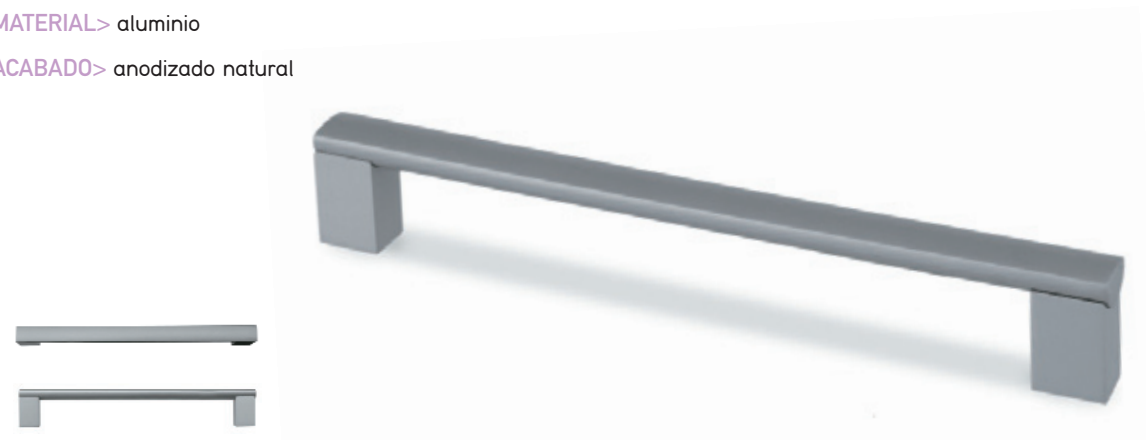
> TIRADOR MOD. 371 /	PAG. 121	> TIRADOR MOD. 301 /	PAG. 130
> TIRADOR MOD. 635 /	PAG. 122	> TIRADOR MOD. 309 /	PAG. 130
> TIRADOR MOD. 302 /	PAG. 123	> TIRADOR MOD. 307 /	PAG. 131
> TIRADOR MOD. 335 /	PAG. 124	> TIRADOR MOD. 308 /	PAG. 131
> TIRADOR MOD. 345 /	PAG. 124	> TIRADOR MOD. 306 /	PAG. 132
> TIRADOR MOD. 336 /	PAG. 125	> TIRADOR MOD. 305 /	PAG. 132
> TIRADOR MOD. 365 /	PAG. 125	> TIRADOR MOD. 368 /	PAG. 133
> TIRADOR MOD. 334 /	PAG. 126	> TIRADOR MOD. 361 /	PAG. 133
> TIRADOR MOD. 397 /	PAG. 126	> TIRADOR MOD. 379 /	PAG. 134
> TIRADOR MOD. 343 /	PAG. 127	> TIRADOR MOD. 358 /	PAG. 134
> TIRADOR MOD. 350 /	PAG. 127	> TIRADOR MOD. 363 /	PAG. 135
> TIRADOR MOD. 388 /	PAG. 128	> TIRADOR MOD. 364 /	PAG. 135
> TIRADOR MOD. 387 /	PAG. 128	> TIRADOR MOD. 332 /	PAG. 136
> TIRADOR MOD. 341 /	PAG. 129	> ACABADOS /	PAG. 137
> TIRADOR MOD. 303 /	PAG. 129	> TABLERO EXPOSITOR /	PAG. 138



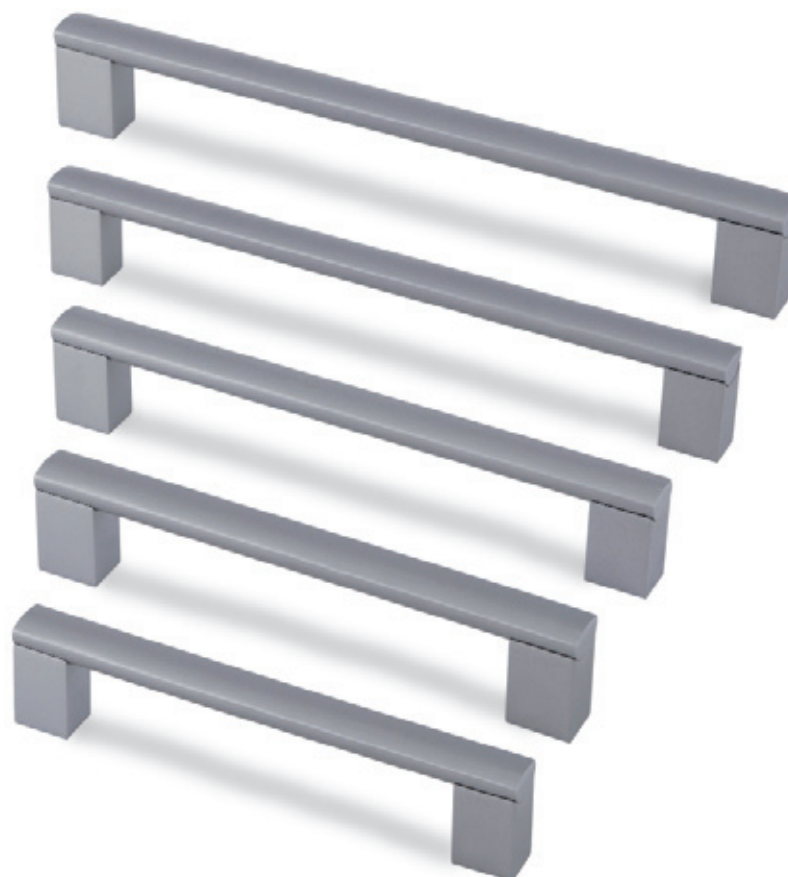
Ref.: 371

MATERIAL> aluminio

ACABADO> anodizado natural



					$\emptyset$		
160	172	36,3	15,9	14,9	-	10	40
192	204	36,3	15,9	14,9	-	10	40
224	236	36,3	15,9	14,9	-	10	40
288	300	36,3	15,9	14,9	-	10	40
352	364	36,3	15,9	14,9	-	10	40
416	428	36,3	15,9	14,9	-	10	40



Ref.: 635

MATERIAL > aluminio

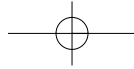
ACABADO > anodizado natural



					$\emptyset$		
-	297,5	30,6	2	20,8	-	25	25
-	347,5	30,6	2	20,8	-	25	25
-	397,5	30,6	2	20,8	-	25	25
-	447,5	30,6	2	20,8	-	25	25
-	497,5	30,6	2	20,8	-	25	25
-	597,5	30,6	2	20,8	-	25	25
-	697,5	30,6	2	20,8	-	25	25
-	797,5	30,6	2	20,8	-	25	25
-	897,5	30,6	2	20,8	-	25	25
-	1197,5	30,6	2	20,8	-	25	25



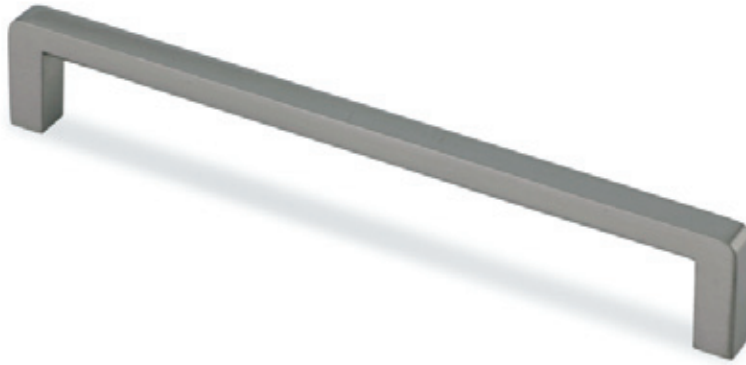
Bajo pedido y cantidad mínima, tiempo de entrega a determinar. Se puede realizar cualquier medida del tirador 635



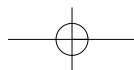
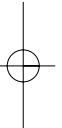
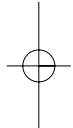
Ref.: 302

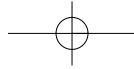
MATERIAL > zamak

ACABADO > níquel satinado



					$\emptyset$		
160	169	29	9	9	-	25	50
192	201	29	9	9	-	25	50
322	329	29	9	9	-	-	25

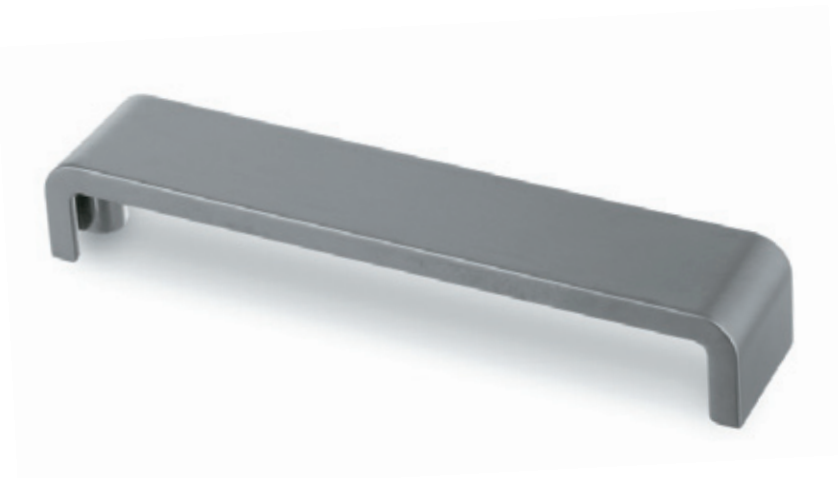




Ref.: 335

MATERIAL > zamak

ACABADO > cromo mate



160	169,7	27,8	33	33	-	8	32	

Ref.: 345

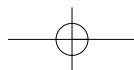
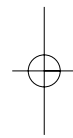
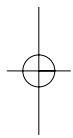
MATERIAL > zamak

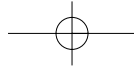
ACABADO > níquel satinado

> cromo mate



160	210	27,5	20	20	-	10	40	



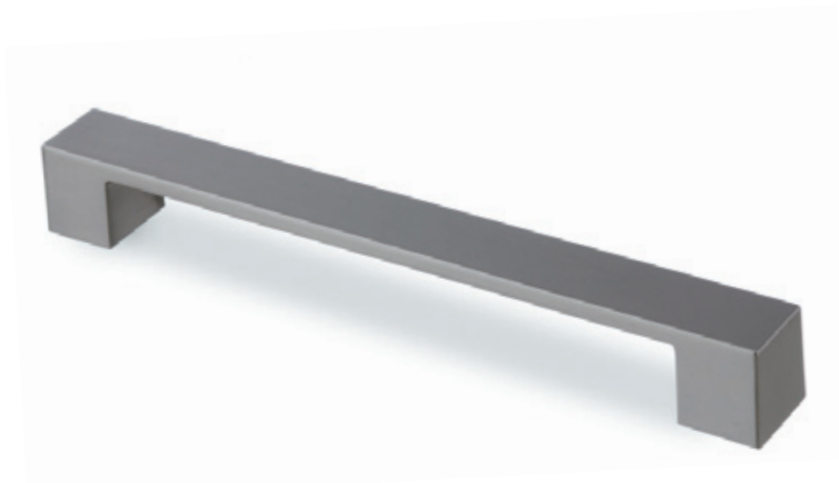


**Ref.: 336**

**MATERIAL**> zamak

**ACABADO**> níquel satinado

> cromo mate

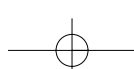
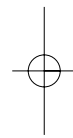
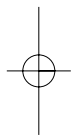
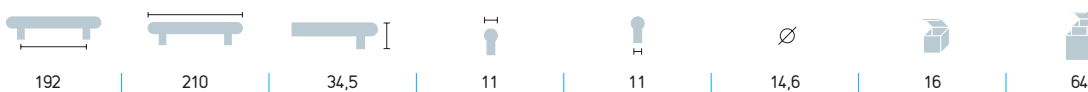


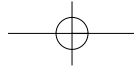
**Ref.: 365**

**MATERIAL**> zamak

**ACABADO**> níquel satinado

> cromo mate





Ref.: 334

MATERIAL > zamak

ACABADO > cromo brillo

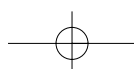
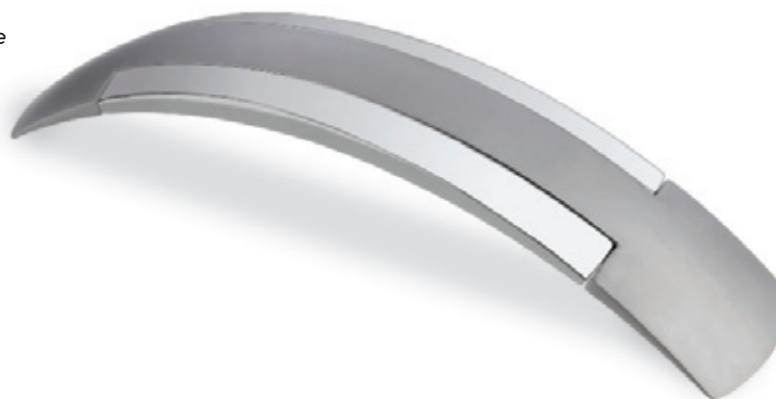
> cromo mate

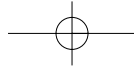


Ref.: 397

MATERIAL > zamak

ACABADO > cromo brillo / cromo mate





**Ref.: 343**

**MATERIAL**> zamak

**ACABADO**> cromo brillo

> níquel satinado



192 / 224



232,2



36



12,7



13,9



Ø



14



56

**Ref.: 350**

**MATERIAL**> zamak

**ACABADO**> níquel satinado



128 / 160



168



35,9



12,3



13,5



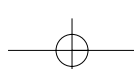
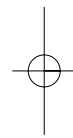
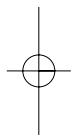
Ø

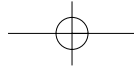


14



56

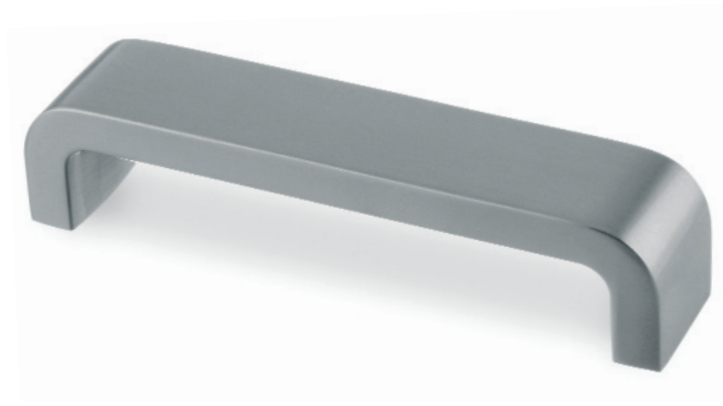




Ref.: 388

MATERIAL > zamak

ACABADO > níquel satinado

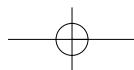
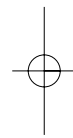
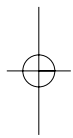


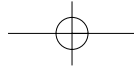
Ref.: 387

MATERIAL > zamak

ACABADO > cromo mate

> níquel satinado

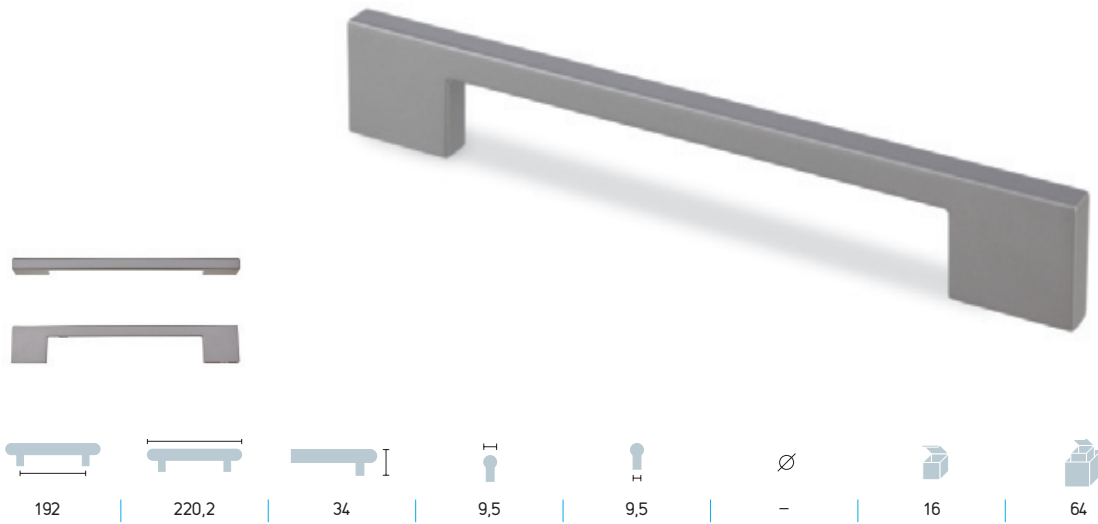




**Ref.: 341**

**MATERIAL**> zamak

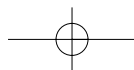
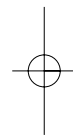
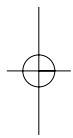
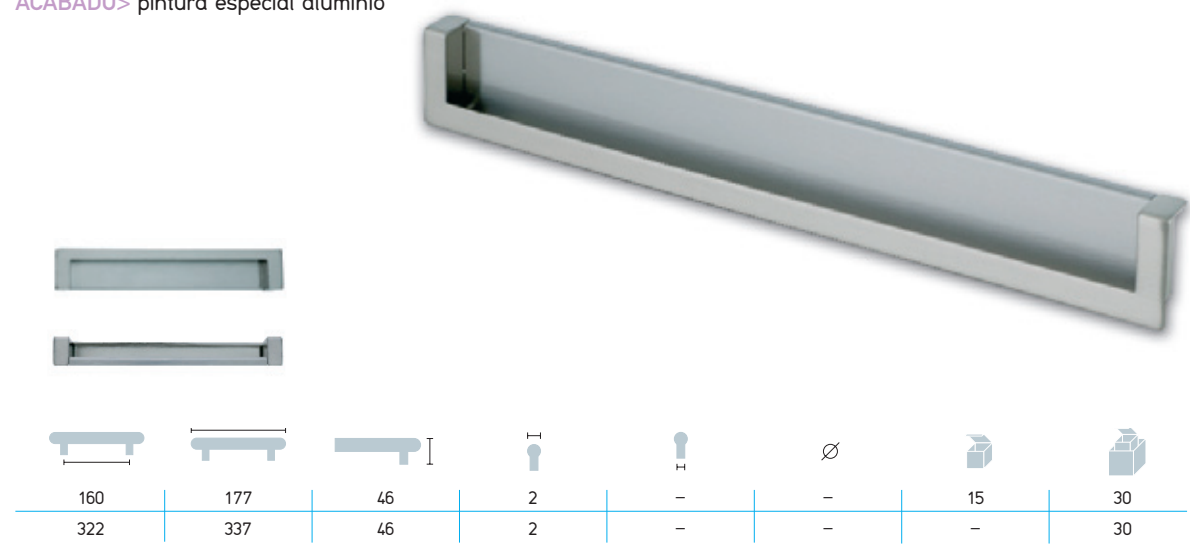
**ACABADO**> cromo mate

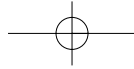


**Ref.: 303**

**MATERIAL**> zamak

**ACABADO**> pintura especial aluminio

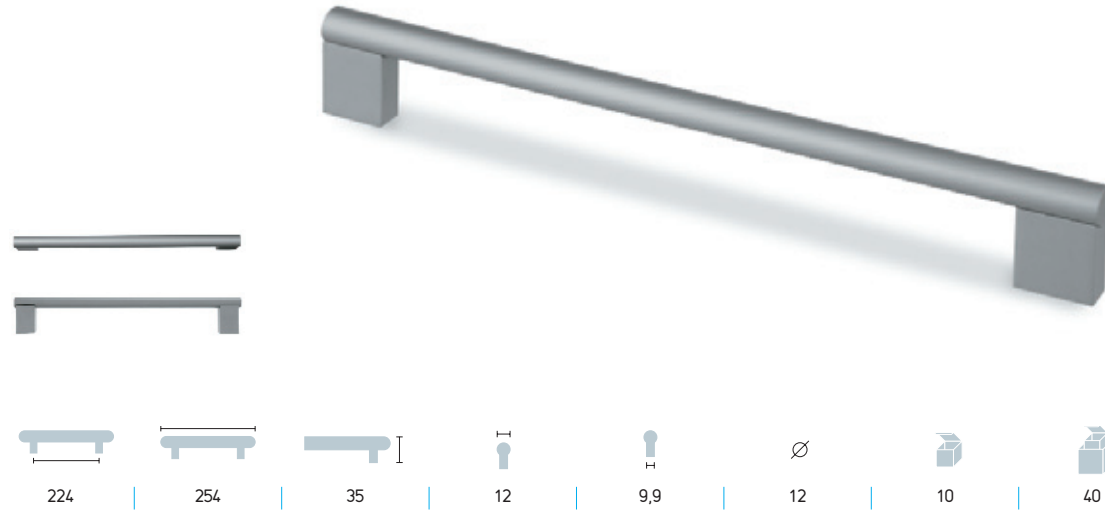




Ref.: 301

MATERIAL > aluminio

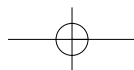
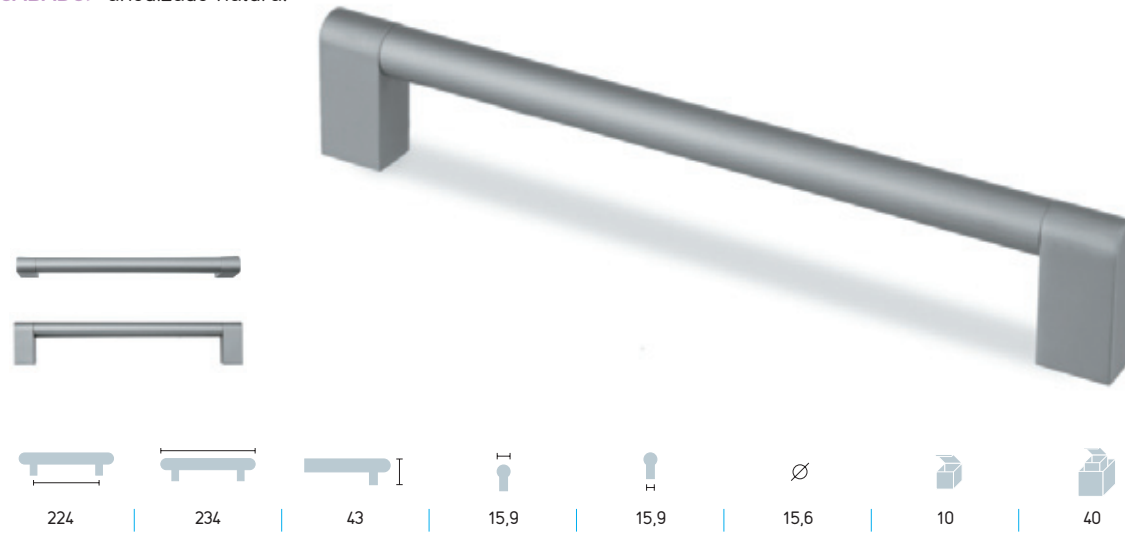
ACABADO > anodizado natural

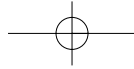


Ref.: 309

MATERIAL > aluminio

ACABADO > anodizado natural





Ref.: 307

MATERIAL> zamak

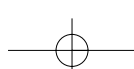
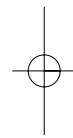
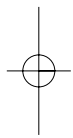
ACABADO> cromo brillo

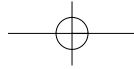


Ref.: 308

MATERIAL> zamak

ACABADO> cromo brillo





Ref.: 306

MATERIAL > zamak

ACABADO > cromo brillo



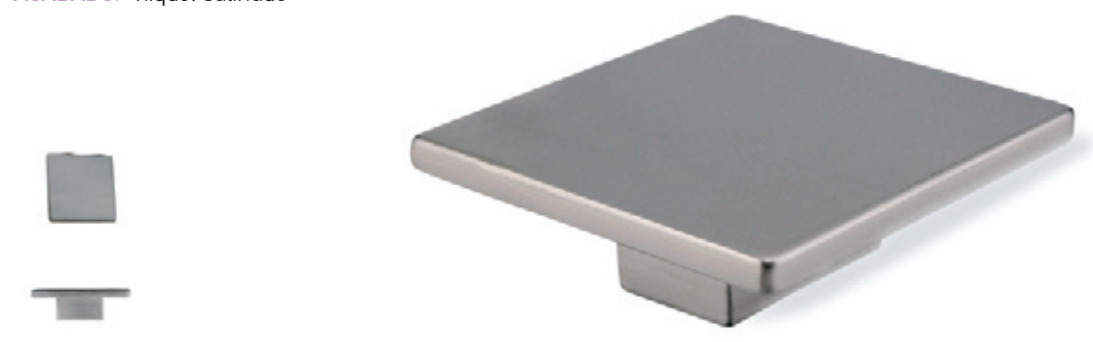
320	375	23	25	25	-	-	25

132

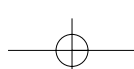
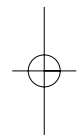
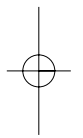
Ref.: 305

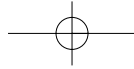
MATERIAL > zamak

ACABADO > níquel satinado



32	80	28	80	25x40	-	18	36





**Ref.: 368**

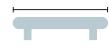
**MATERIAL**> zamak

**ACABADO**> níquel satinado

> cromo mate



-



19,75



27,3



19,75



25



∅ -



50



100

**Ref.: 361**

**MATERIAL**> zamak

**ACABADO**> pintura especial aluminio



-



15



23,9



15



7,56



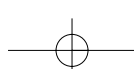
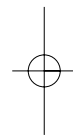
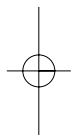
∅ -

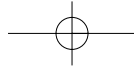


50



100





Ref.: 379

MATERIAL > zamak

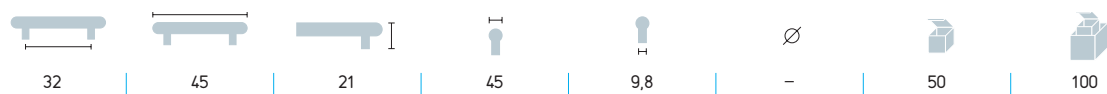
ACABADO > bronce marmolado

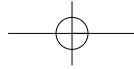


Ref.: 358

MATERIAL > zamak

ACABADO > bronce marmolado



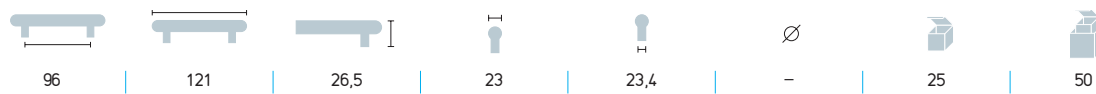


Ref.: 363

MATERIAL > zamak

ACABADO > bronce marmolado

> plata vieja

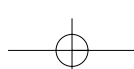
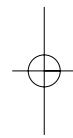
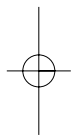


Ref.: 364

MATERIAL > zamak

ACABADO > bronce marmolado

> plata vieja



Ref.: 332

MATERIAL > zamak / porcelana

ACABADO > bronce viejo



136



## > ACABADOS

### Baños

CROMO BRILLO



CROMO MATE



NÍQUEL SATINADO



NÍQUEL MATE



BRONCE MARMOLADO



PLATA VIEJA



### Pinturas

ANODIZADO NATURAL

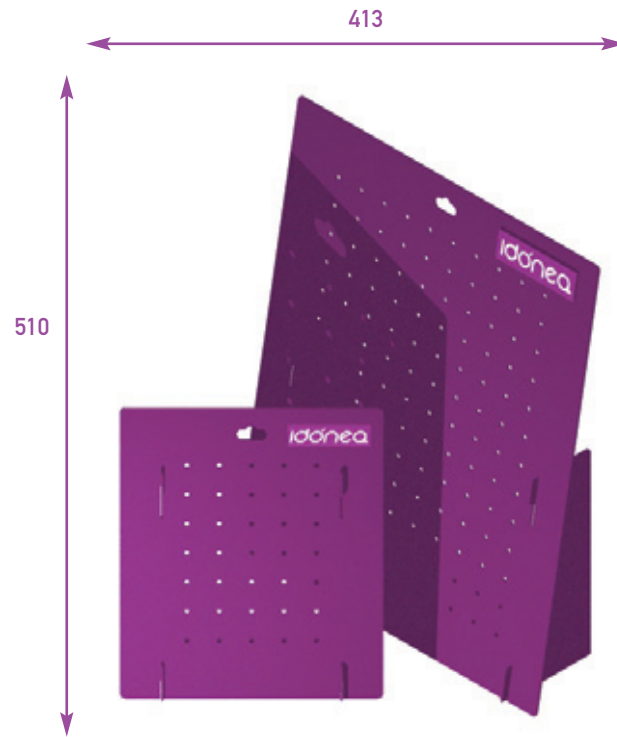


ALUMINIO PINTURA



## > TABLERO EXPOSITOR

De pared



De mesa

